

PENTAGAN

XT-23

3 PART DIFF
HEMATOLOGY ANALYZER



*New generation Hematology
For Better Patient care*

DESIGNED IN
ITALY



Accurate and reliable results Made for you

Name:	Sex:	Age:	ID: 000
WBC		9.3	× 10 ⁹ /L
LYM%		41.7	%
MID%		4.5	%
GRAN%		53.5	%
LYM#		3.7	× 10 ⁹ /L
MID#		0.4	× 10 ⁹ /L
GRAN#		5.0	× 10 ⁹ /L

Screening for inflammation

Lym and Neutrophil population provides clinical data useful for better patient management .

RBC	4.83	× 10 ¹² /L
HGB	144	g/L
HCT	37.5	%
MCV	77.6	fL
MCH	29.6	pg
MCHC	384	g/L

Screening for anemia

Both RDW-SD and RDW-CV combined with MCV can set criteria for differentiation of iron deficiency anemia and beta thalassemia.

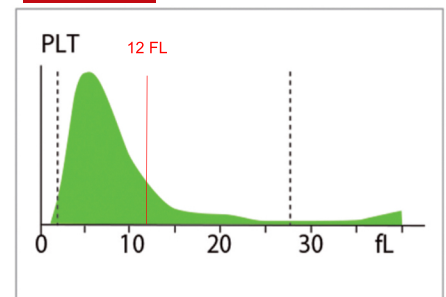
RDW_CV	15.2	%
RDW_SD	40.7	fL

Screening for the cause of thrombocytopenia

PDW, P-LCR and MPV have sufficient sensitivity and specificity in the diagnosis of immune thrombocytopenia.

PLT	241	× 10 ⁹ /L
MPV	11.9	fL
PDW	10.8	fL
PCT	0.28	%
P_LCR	15.2	%
P_LCC	77.6	× 10 ⁹ /L

P - LCR

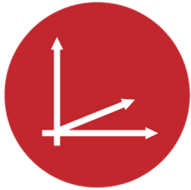


CERAMIC SYRINGES ,THE BEST ALTERNATIVE FOR SRV USING CERAMIC ORINGS

Accurate detection technology inherent in XT -23 .Ceramic syringes measures the required volume of sample precisely to provide accurate and reliable WBC, RBC and PLT count.

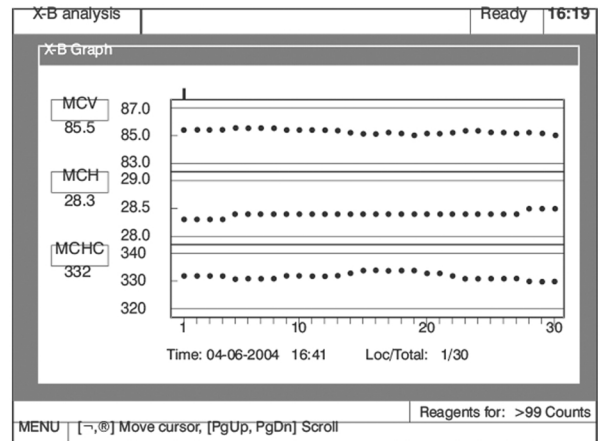
14 Type Flag Abnormity & Smear Study

W	Neutropenia	R	Anisocytosis	P	Thrombocytopenia
	Neutrophilia		Microcytosis		Thrombocytosis
	Lymphopenia		Macrocytosis	L	
	Lymphocytosis		Hypochromia		
B	Leukocytopenia	B	Anemia		
	Leukocytosis		Erythrocytosis		
C		C		T	



Quality control management

- L-J and X-B analysis
- Upto 9 controls lots - 31 runs/lot



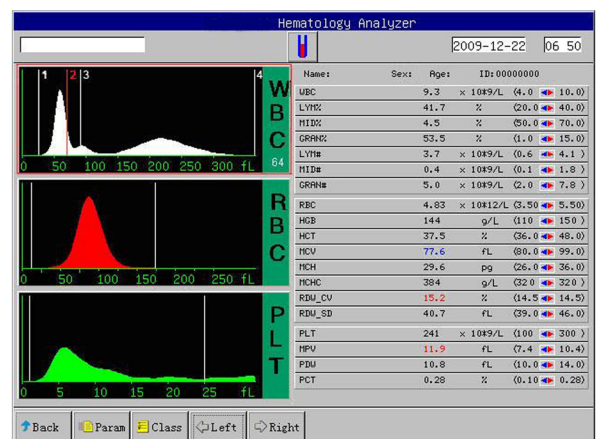
Data Management

- Storage: 2,00,000 reports with graph
- Compatible to print A4 size patient report.
- Computer interface software



User Friendly

- 10.4" large colour TFT Touch screen
- keyboard & mouse input
- Single page view of full report



XT-23



PENTAGAN

3 PART DIFF HEMATOLOGY ANALYZER

TECHNICAL SPECIFICATION

Principle

Impedance method for WBC, RBC and PLT counting, Cyanide free reagent for hemoglobin test.

Performance

Parameter	Linearity Range	Precision (CV %)	Carryover
WBC($10^3/L$)	0-100	$\leq 3.5\%$ (4.0-6.9) $\leq 2.0\%$ (7.0-10.5)	$\leq 0.5\%$
RBC($10^{12}/L$)	0-8.00	$\leq 1.5\%$ (3.5-6.5)	$\leq 0.5\%$
Hgb(g/L)	0-280	$\leq 1.5\%$ (100 - 180)	$\leq 0.5\%$
MCV (fL)		$\leq 1.0\%$ (70 - 110)	
PLT ($10^9/L$)	0.999	$\leq 5.0\%$ (100 - 149) $\leq 4.0\%$ (150 - 500)	$\leq 1.0\%$

Reagent

Pentagan DILUENT	20 Ltr.
Pentagan DETERGENT	5 Ltr.
Pentagan LYSE	500 ml
DAILY CLEANER	100 ml

Sample Volume

Predilute mode	20 μ l
Whole blood mode	18 μ l

Display

10.4 inch TFT Touch Screen

Data Storage Capacity

Up to 2,00,000 results including numeric and graphical information.

Throughput 60 test per hour.

Communication

Lan Port support, HL7 protocol
Support LIS

Interface

4 USB port (for external printer, software upgrade, barcode reader, WIFI adapter, keyboard and mouse)
LAN port (1)

Printout

Thermal recorder, 57mm wide paper, various printout formats
External printer optional (Laserjet HP P1108)

Operating Environment

Temperature : 10°C - 30°C
Humidity : 10°C - 90°C
Air Pressure : 70kPAN106kPa

Power Requirement

100V-240V
 $\leq 300VA$
50Hz/60Hz

Dimension and Weight

Dimension : W (330mm) x D (440mm) x H(500mm)
Weight : $\leq 20Kg$

Interface Software

- Interface software provider flags on abnormal WBC, RBC & PLT.
- Facilities to print & store patient results.

Mode type

Whole Blood, Predilute, Microcuvette

Total Parameters: 22

CBC: WBC, RBC, HGB, HCT, MCV, MCH, MCHC, RDW-CV, RDW-SD, PLT, MPV, PCT, PDW-CV, PDW-SD, P-LCR, P-LCC.

3 Part Diff: Lymph % & #, Mid % & #, Gran % & #

Histograms

3(WBC/RBC/PLT)

Sample Volume:

Whole Blood : 9 μ L
Pre-diluted : 20 μ l
Microcuvette : 20 μ l



MICRO

BIOMEDICALS

No:1/2 Palani Street Perambur ,
Chennai 600 -011 . India

Contact us: +91 9940170690
+91 44 25512709
+91 9840625271

Visit us on : microbiomedicals.com
E-mail: info@microbiomedicals.com