

PKL PPC-200

Automatic Chemistry Analyzer

Specifications

Assay methods: End Point, Kinetic, Fix time etc.
Principle: Photoelectric colorimetry
Light Source: Halogen lamp 12V/20W
Photometry range: 0~3.2Abs
Resolution: 0.0001Abs
Wavelength: 340nm\405nm\450nm\492nm\510nm\546nm\578nm\630nm\700nm\800nm
Throughput: 200 tests/hour
Reagent tray: 40 reagent positions (include 1 detergent position, 1 dilution position)
Sample tray: 40 sample positions, including detergent, standard, QC, STAT positions
Reaction tray: 60 reaction cuvettes
Sample volume: 2~100ul, with 0.1ul increment
Reagent volume: R1:10~300uL, R2: 10~300uL, with 0.5uL increment
Minimum reaction volume: 180uL
Maximum reaction time: 10 minutes
Water Consumption: 5L/hour under working status
Clean unit: 7-step auto-washing system with De-ion Water
Calibration: Calibration reset, select best test point by reaction curve, no need second calibration Line/non-line; multi-standards assay
Control rules: Westgard multi-rule, Cumulative sum check, Twin plot 3 level controls for each item, analyzing and printing QC analysis diagram
Temperature control: incubator 37±0.1
Power supply: AC 230(1±10%)V, 50/60Hz, 500VA
Ambient: Operating temperature: 10~30 Relative humidity: ≤85% Atmospheric pressure: 86~106kPa

Features

- 24 hour non-stop cooling system to ensure reagent at 2-8
- Durable ceramic syringes to ensure accuracy & precision
- High accurate optical system
- Collision protection For probe, stop & alarm automatically once touching barrier, not affect former tests
- Automatic eligible cuvettes detection & selection
- Select best test point by reaction curve, create new factor automatically
- Support LIS interface
- Optional Bar Code Reader for Samples

PARAMEDICAL
ITALIA



PKL PPC-200
Automatic Chemistry Analyzer



ISO 9001-2000
Certificato N.9120PAR2



ISO 13485-2003
Certificato N.9124PAR3

- Random access, 200 tests per hour
- Durable ceramic syringes
- Select best test point by reaction curve, create new factor automatically
- Support bi-direction LIS and HIS interface

Imported by:-

MICRO
ENTERPRISES

No.7/58, kamaraj nagar, 8th Street, Chennai-600 039. Ph: 9940170690, 044-25512709 Email: micro.bjk@gmail.com

PARAMEDICAL S.r.l. Sede amministrativa ed operativa
Sede legale: VIA IRNO, (ex Tabacchificio Mattiello - Lotto B/2) Magazzino Tel. 089.385093 E-MAIL: pokler@tin.it
Corso Garibaldi 109 84098 PONTECAGNANO FAIANO (SA) * ITALIA Amministr. Tel. 089.385027 INTERNET: www.paramedical.it
84123 SALERNO P. IVA 03117920656 Fax 089.3854479 www.pokler.it

PKL PPC-200

Automatic Chemistry Analyzer

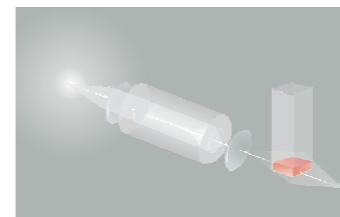


High performance mixer design



- Absence of cross contamination
- Optimal homogenization in minimum time
- Mixing immediately after dispensing of sample and the second reagent

Stable Optical System



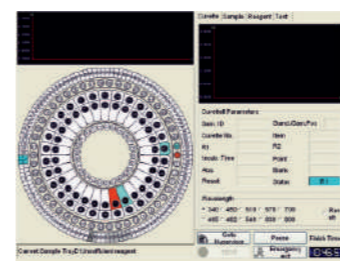
- High accurate, close, static state optical system
- Spot photometry with high speed digital transmission system
- Durable cuvettes
- 7-step auto-washing system with deion-water to ensure cuvettes clean and decrease cross contamination
- 60 reaction cuvettes located in a constant temperature incubator
- Low consumption, open reagent design

Multi-function sample/reagent tray



- 40 reagent positions, support 20mL, 2 ml, 1ml reagent bottle type.
- 40 sample positions including routine, stat, control and standard
- Various primary tubes and special cups can be used
- Up to 20 virtual sample tray can be programmed
- 24 hours nonstop cooling system with peltier element

Dynamic and real time display of running status



- Running status of reagent tray, sample tray and reaction tray
- Real time monitoring of reagent residual volume
- Intelligent carry over setting to adjust test sequence, STAT test priority
- Probe depth adjustment automatically
- Real time monitoring of reaction curve
- Real time diagnosis of system working status

Accurate Sampling Sample/Reagent System

- Collision protection
- Liquid level detection
- Internal and external probe washing
- Probe depth adjustment automatically

